

## Stud Type

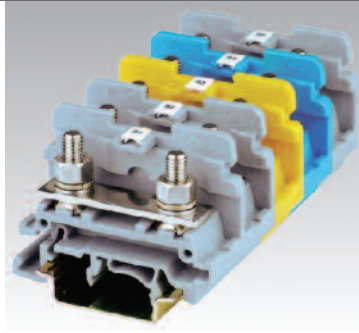
### Terminal Blocks

Altech DIN rail mounting Stud Type Terminal Blocks are preferred for the connections that are subjected to very severe vibrations.

The wire is crimped to a ring / fork type lug and is screwed on to the flat current bar in terminal. The range includes terminal blocks for wires of size 22-4 AWG.

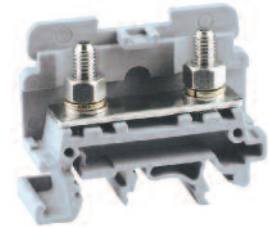
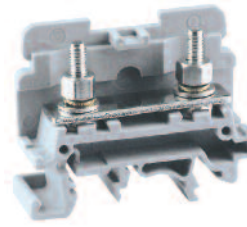
Jumpering can be achieved with the aid of external jumpers. The jumpers are insulated to make them shock proof. The terminal blocks have marker holding recess to accommodate MT type marking tags.

It is recommended to use protective covers in transparent plastic because assemblies of these terminals blocks are not fully covered.



CSTSN4U

CSTSN5U



Terminal Width	17 mm			17 mm		
Height x Length	44.5 x 50 mm			44.5 x 50 mm		
Stripping Length	12 mm			12 mm		
Insulation Material	Polyamide 6.6			Polyamide 6.6		
Type of Connection	2 screw connection for M4 ring/fork lugs			2 screw connection for M5 ring/fork lugs		
Approvals						
Wire Range	22-6 AWG	1.5-10 sq.mm	22-6 AWG	22-4 AWG	1.5-16 sq.mm	22-4 AWG
Voltage Rating	600 V	800 V	600 V	600 V	800 V	600 V
Current Rating	65 A	57 A	65 A	80 A	76 A	80 A
Torque	14 lb-in	1.2 Nm	14 lb-in	17.5 lb-in	2.0 Nm	17.5 lb-in

	Cat. No.	Std. Pk.	Cat. No.	Std. Pk.
Terminal Block	CSTSN4U	100	CSTSN5U	100
End Plate	EPCSTSN5U	50	EPCSTSN5U	50
DIN Rail for ordering information refer to page 62				
End Stop for ordering information refer to page 63	CA702 CA802	50 50	CA702 CA802	50 50
Protective Cover for covering	2 Terminal 3 Terminal	CSTSPC1 100 CSTSPC1-1 100	CSTSPC1 100 CSTSPC1-1 100	
Protective Cover in Length	100 mm 200 mm 300 mm	CSTSPC1-2 10 CSTSPC1-3 10 CSTSPC1-4 10	CSTSPC1-2 10 CSTSPC1-3 10 CSTSPC1-4 10	
Insulated Removable Jumpers	2 way 3 way 4 way	CA514/1-2 100 CA514/1-3 50 CA514/1-4 50	CA514/1-2 100 CA514/1-3 50 CA514/1-4 50	
Insulated Permanent Jumpers	2 way 3 way 4 way	CA514/3-2 100 CA514/3-3 50 CA514/3-4 50	CA514/3-2 100 CA514/3-3 50 CA514/3-4 50	
Marking Tags (MTType)	MT2	100	MT2	100



### COLOR BLOCKS

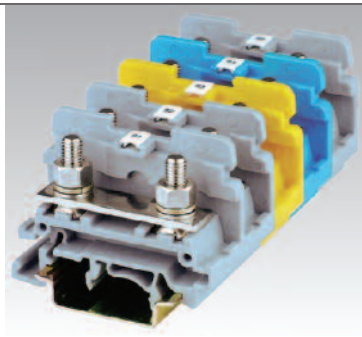
(other than grey standard)

When ordering please add color suffix to Cat. No.

Example: CTS2.5U-N/R

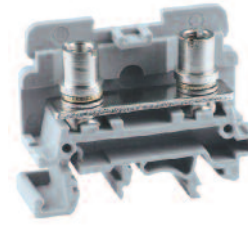
Color	Ordering Suffix
Red	R
Blue	BU
Black	BL
Orange	O
Green	G
Yellow	Y
White	W
Beige	BG
Dark Brown	DB

<sup>1</sup> Approval pending.



## CSTSB4U

## CSTSB5U



Terminal Width	17 mm			17 mm		
Height x Length	44.5 x 50 mm			44.5 x 50 mm		
Stripping Length	12 mm			12 mm		
Insulation Material	Polyamide 6.6			Polyamide 6.6		
Type of Connection	2 screw connection for M4 ring/fork lugs			2 screw connection for M5 ring/fork lugs		
Approvals						
Wire Range	22-6 AWG	1.5-10 sq.mm	22-6 AWG	22-4 AWG	1.5-16 sq.mm	22-4 AWG
Voltage Rating	600 V	800 V	600 V	600 V	800 V	600 V
Current Rating	65 A	57 A	65 A	80 A	76 A	80 A
Torque	14 lb-in	1.2 Nm	14 lb-in	17.5 lb-in	2.0 Nm	17.5 lb-in

		Cat. No.	Std. Pk.	Cat. No.	Std. Pk.
Terminal Block		CSTSB4U	100	CSTSB5U	100
End Plate		EPCSTN5U	50	EPCSTN5U	50
DIN Rail	for ordering information refer to page 62				
End Stop	for ordering information refer to page 63	CA702	50	CA702	50
		CA802	50	CA802	50
Protective Cover for covering	2 Terminal 3 Terminal	CSTSPC1	100	CSTSPC1	100
		CSTSPC1-1	100	CSTSPC1-1	100
Protective Cover in Length	100 mm 200 mm 300 mm	CSTSPC1-2	10	CSTSPC1-2	10
		CSTSPC1-3	10	CSTSPC1-3	10
		CSTSPC1-4	10	CSTSPC1-4	10
Insulated Removable Jumpers	2 way 3 way 4 way	CA514/1-2	100	CA514/1-2	100
		CA514/1-3	50	CA514/1-3	50
		CA514/1-4	50	CA514/1-4	50
Insulated Permanent Jumpers	2 way 3 way 4 way	CA514/3-2	100	CA514/3-2	100
		CA514/3-3	50	CA514/3-3	50
		CA514/3-4	50	CA514/3-4	50
Marking Tags (MTType)		MT2	100	MT2	100

<sup>1</sup> Approval pending.